

Estd Year -1967

Adarsh Education Society's



# ARTS, COMMERCE & SCIENCE COLLEGE, HINGOLI

Akola Road, Hingoli Dist. Hingoli - 431513 (Maharashtra)

(Affiliated to Swami Ramanand Teerth Marathwada University, Nanded)

Accredited By NAAC (B<sup>+</sup>)

**Shri. Kamalkishorji Kabra**  
President

**Shri. Ramchandrajji Kayal**  
Secretary

**Dr. Vilas Aghav**  
Principal

Principal: Office : (Mob.) 9922228656, E-Mail : [adarshcollege208@gmail.com](mailto:adarshcollege208@gmail.com), Websited : [adarshcollege208.ac.in](http://adarshcollege208.ac.in)

Ref.No. AES/20

Date :- / /20

## DOCUMENTS

### CRITERION – VII INSTITUTIONAL VALUES AND BEST PRACTICES

#### 7.1 INSTITUTIONAL VALUES AND SOCIAL RESPONSIBILITIES (50)

##### 7.1.2 The Institution has facilities and initiatives for -

1. Alternate sources of energy and energy conservation measures
2. Management of the various types of degradable and non-degradable waste
3. Water conservation
4. Green campus initiatives
5. Disabled-friendly, barrier free environment

#### GEO-TAGGED PHOTOGRAPHS OF THE FACILITIES



Use of Solar Energy



Use of Solar Energy



Hingoli, MH, India  
Lala Lajapat Rai Nagar, Hingoli, 431513, MH, India  
Lat 19.733953, Long 77.149842  
06/19/2023 03:01 PM GMT+05:30  
Note : Captured by GPS Map Camera

Solar Plant Grid

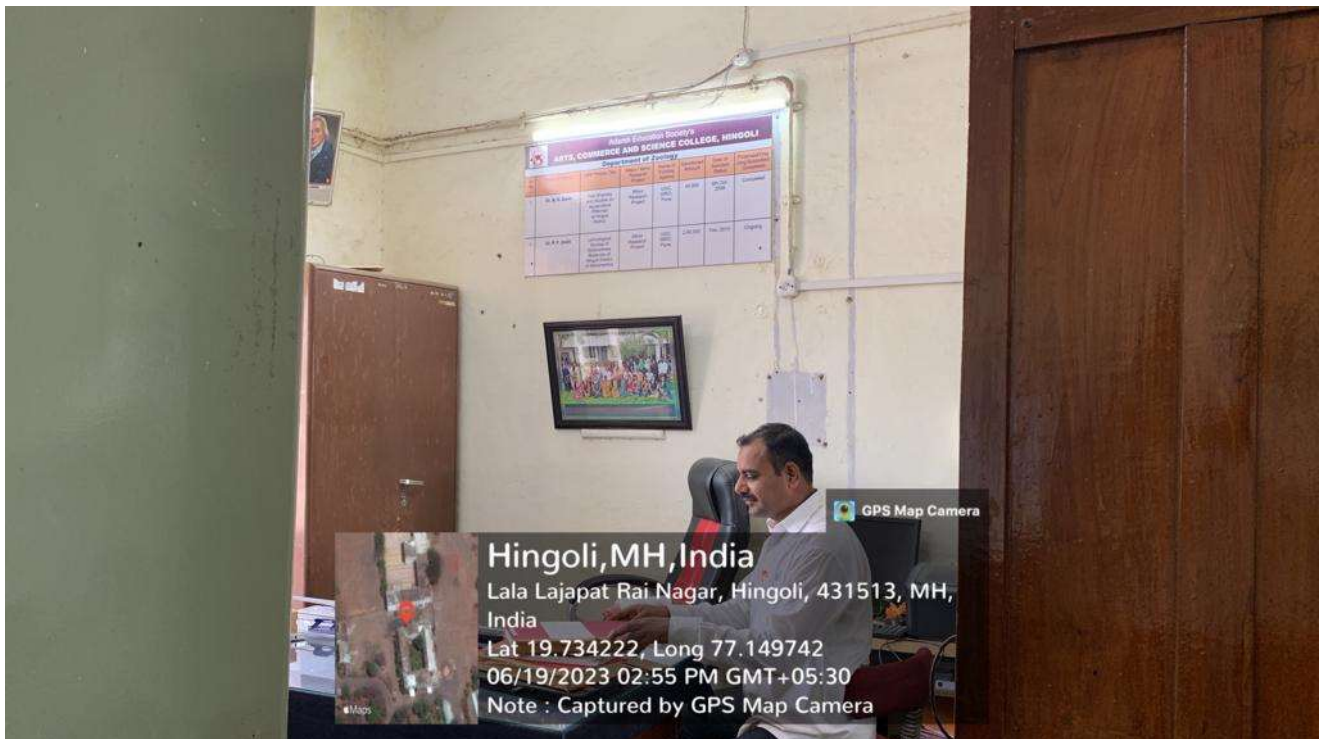


Hingoli, MH, India  
Lala Lajapat Rai Nagar, Hingoli, 431513, MH, India  
Lat 19.733931, Long 77.149818  
06/19/2023 02:57 PM GMT+05:30  
Note : Captured by GPS Map Camera

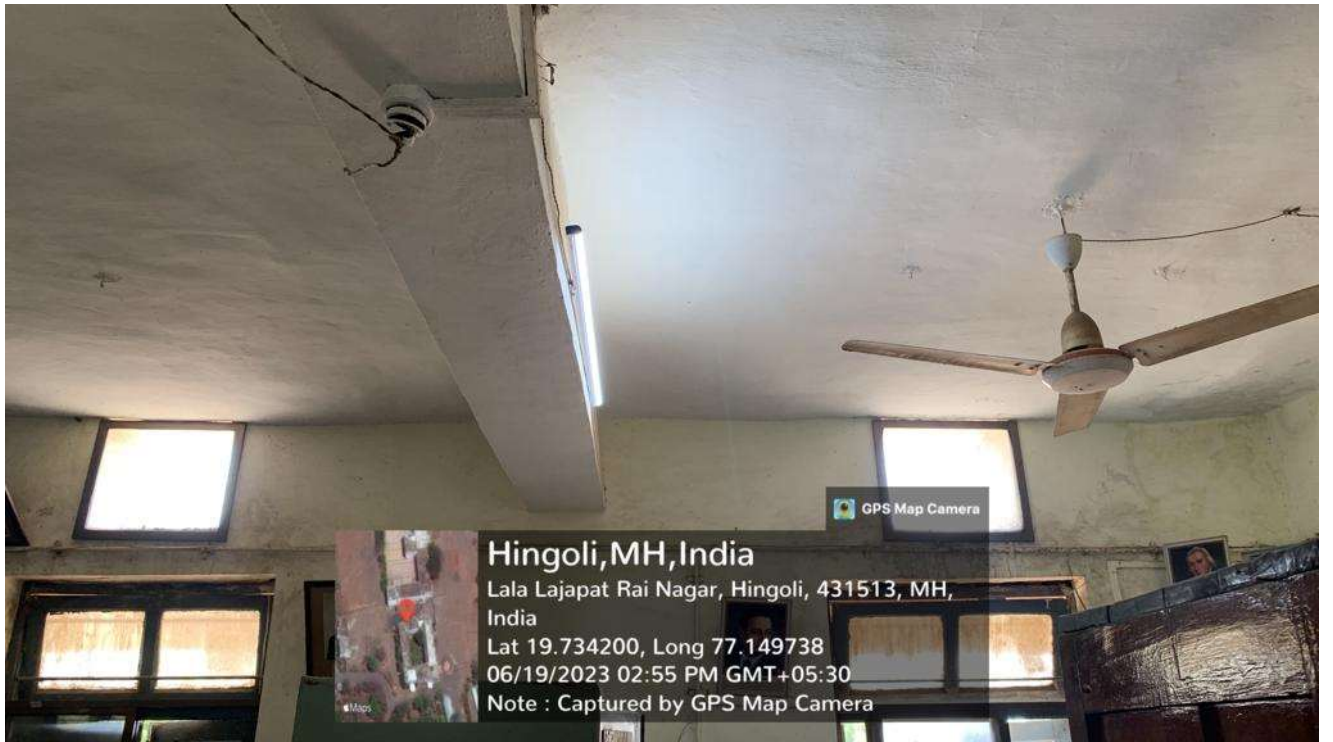
Use of LED in Office



Use of LED in Office



Use of LED in Zoology Department



Use of LED in Zoology



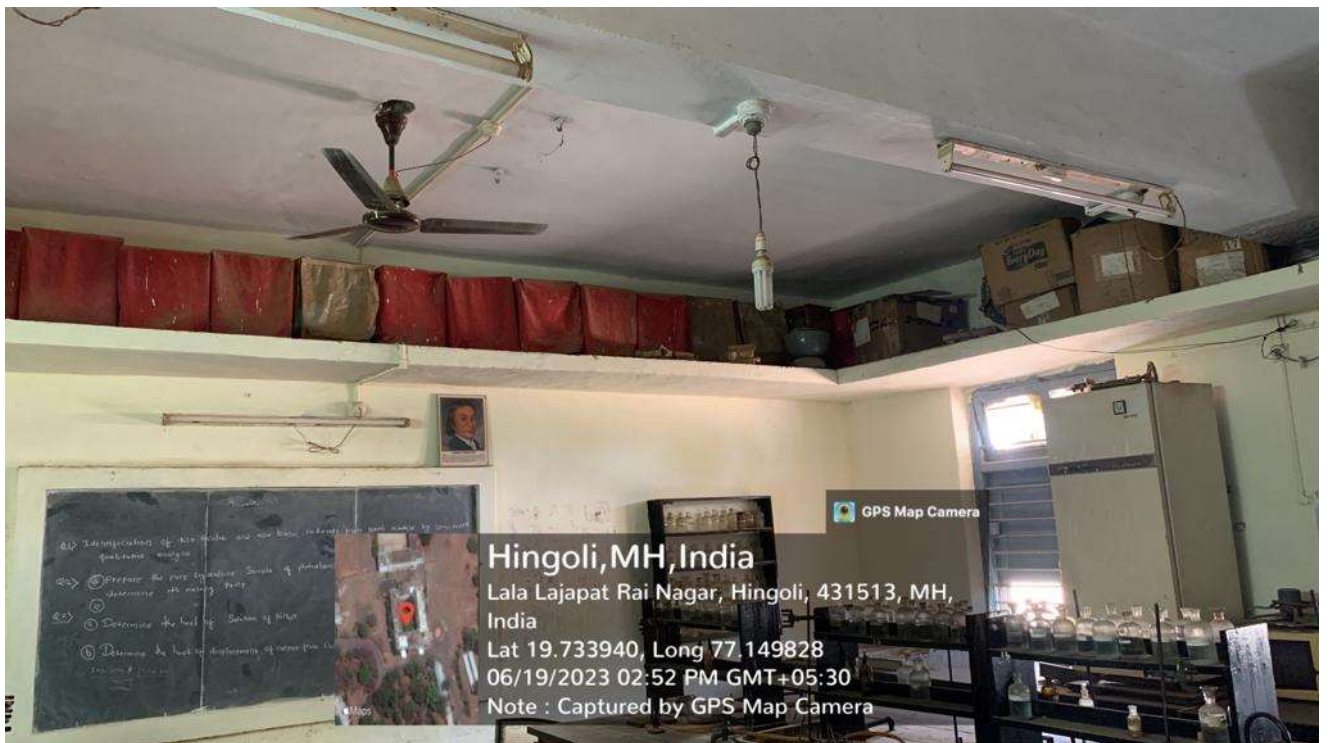
Use of LED in Near Vice Principal Office



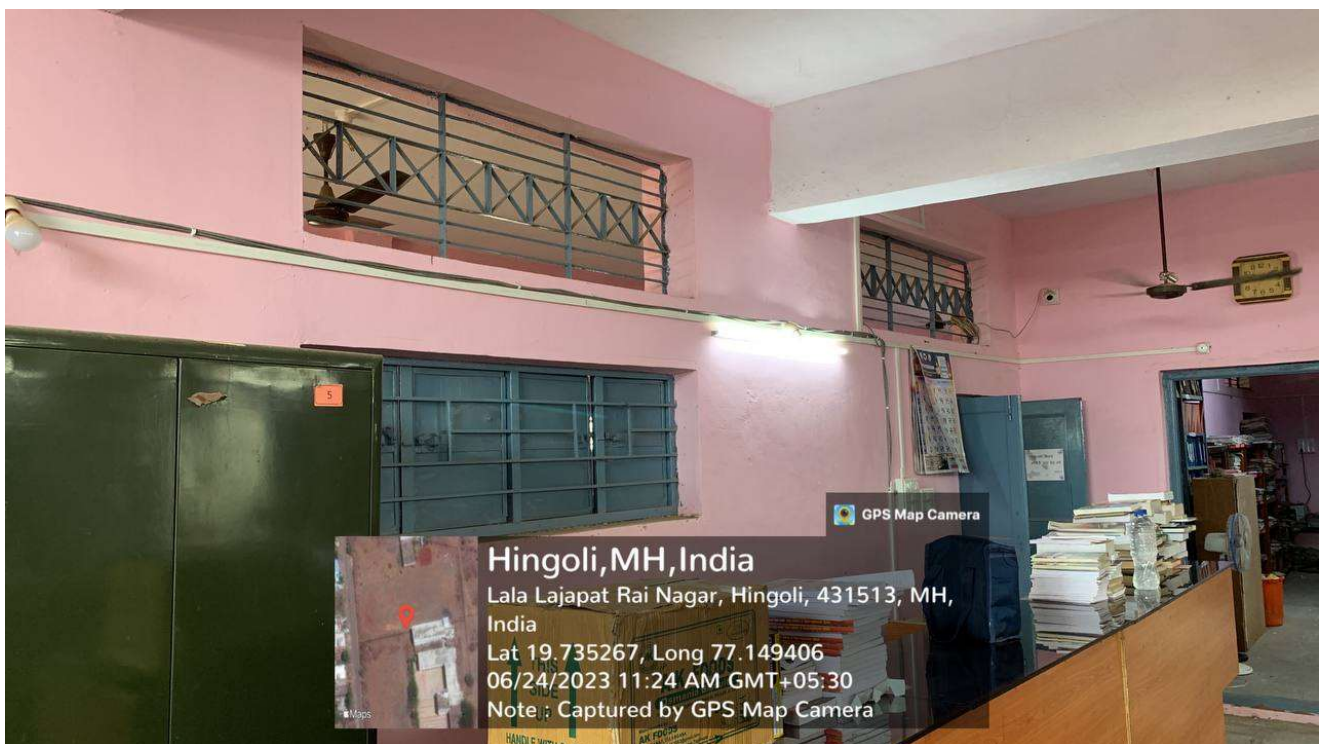
Use of LED in Vice Principal Office



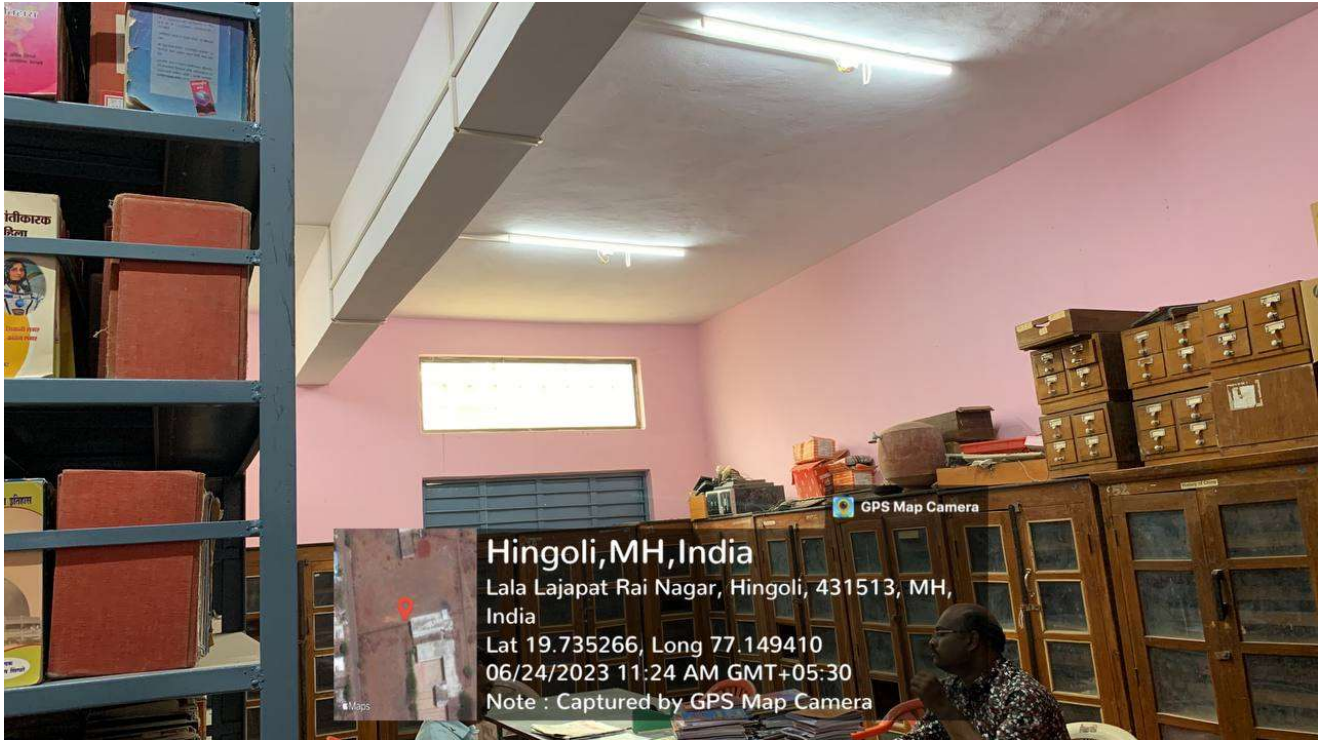
Use of LED in Chemistry



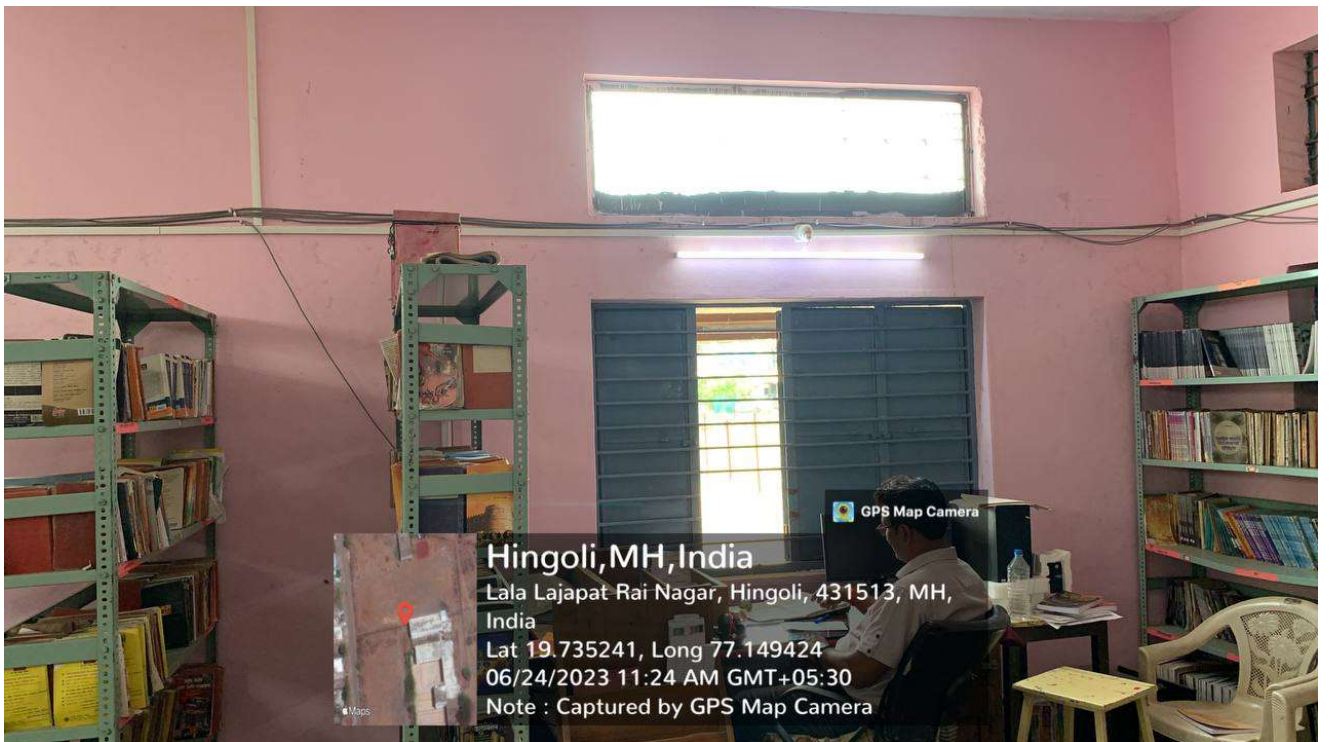
Use of LED in Chemistry



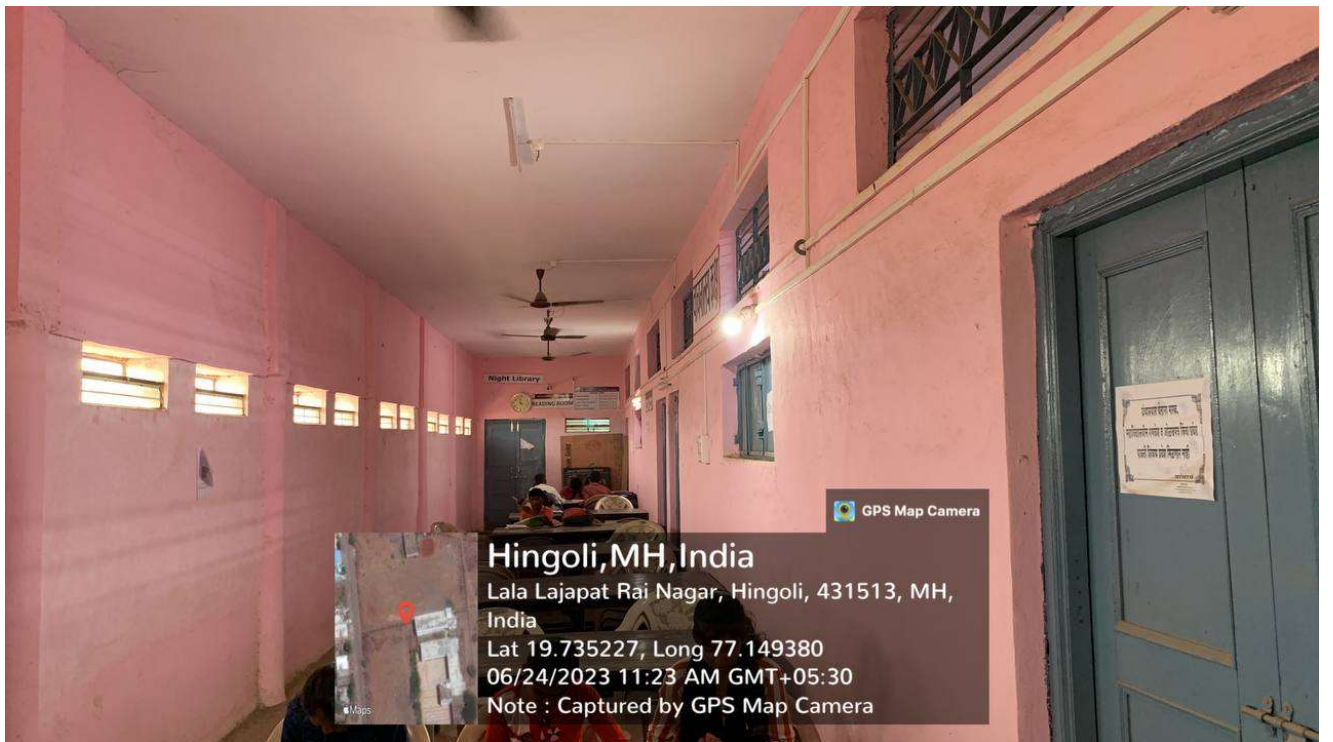
Use of LED in Library



Use of LED in Library



Use of LED in Library



Use of LED in Library

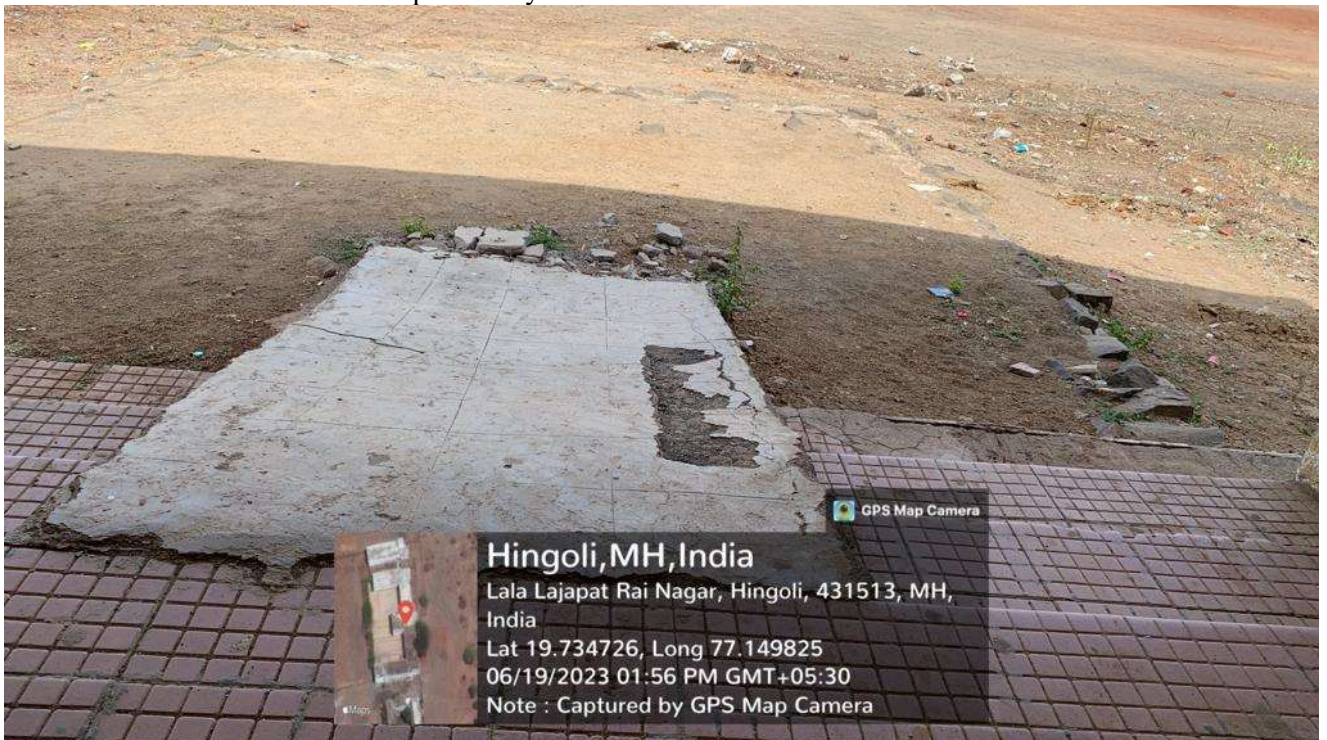


Use of LED in Sahitya Mandir

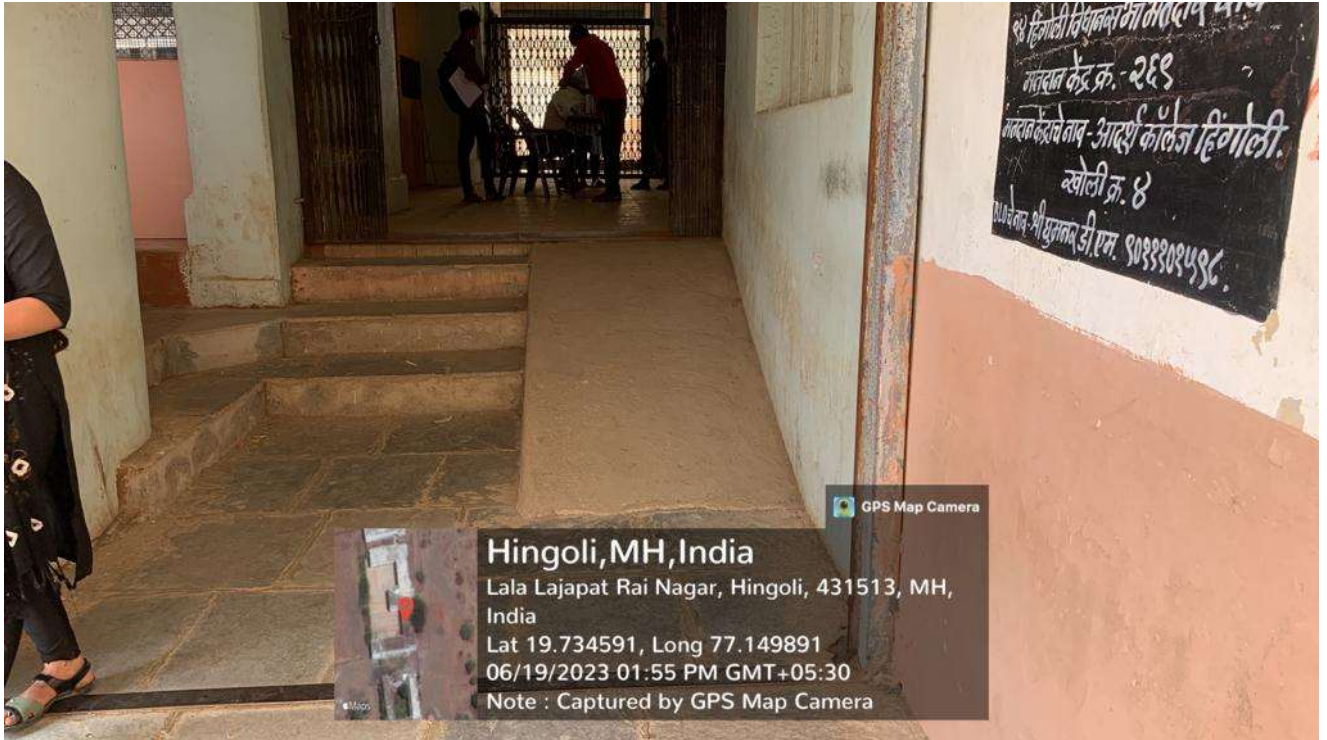


Use of LED in Sahitya Mandir

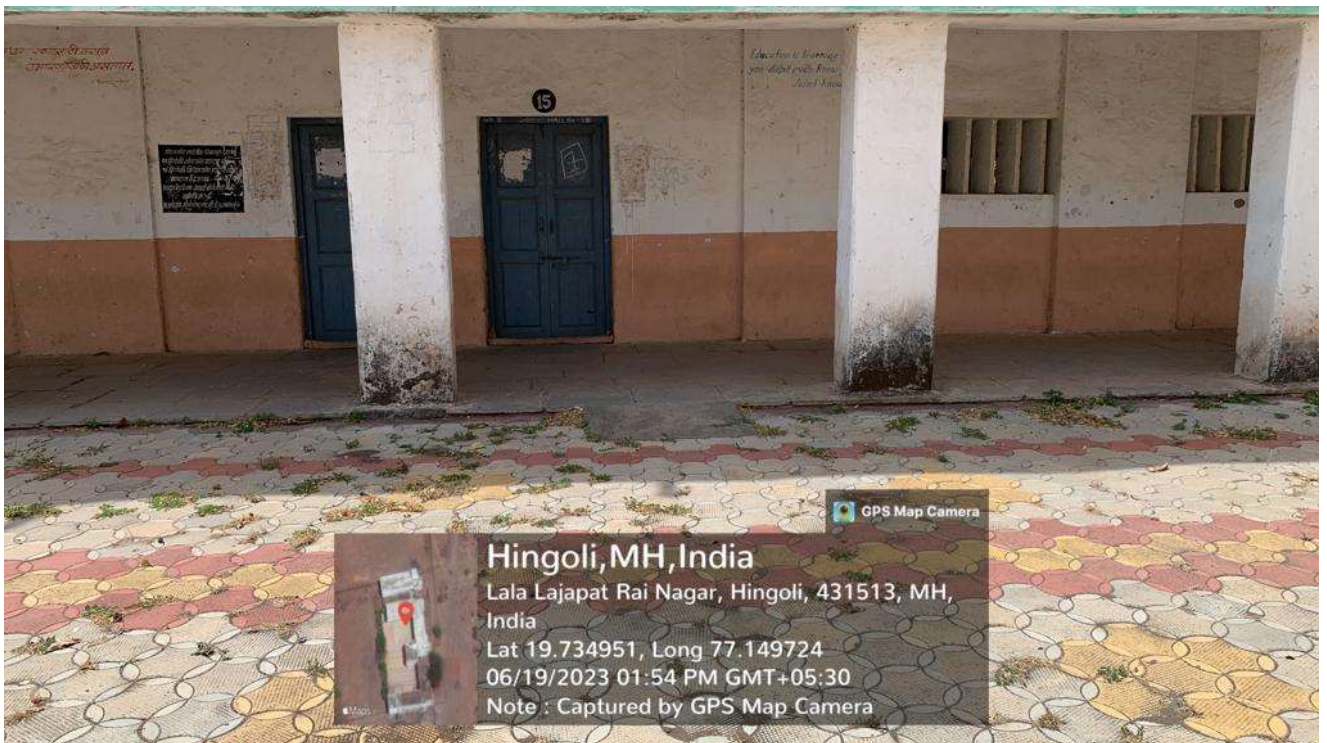
- 5. ***Disabled-friendly, barrier free environment***
- 6. Built environment with ramps for easy access to classrooms.



**Built in Ramp**



**Built in Ramp around Staff room**



**Built in Ramp near Room No 15**



**Built in ramp near entry gate**

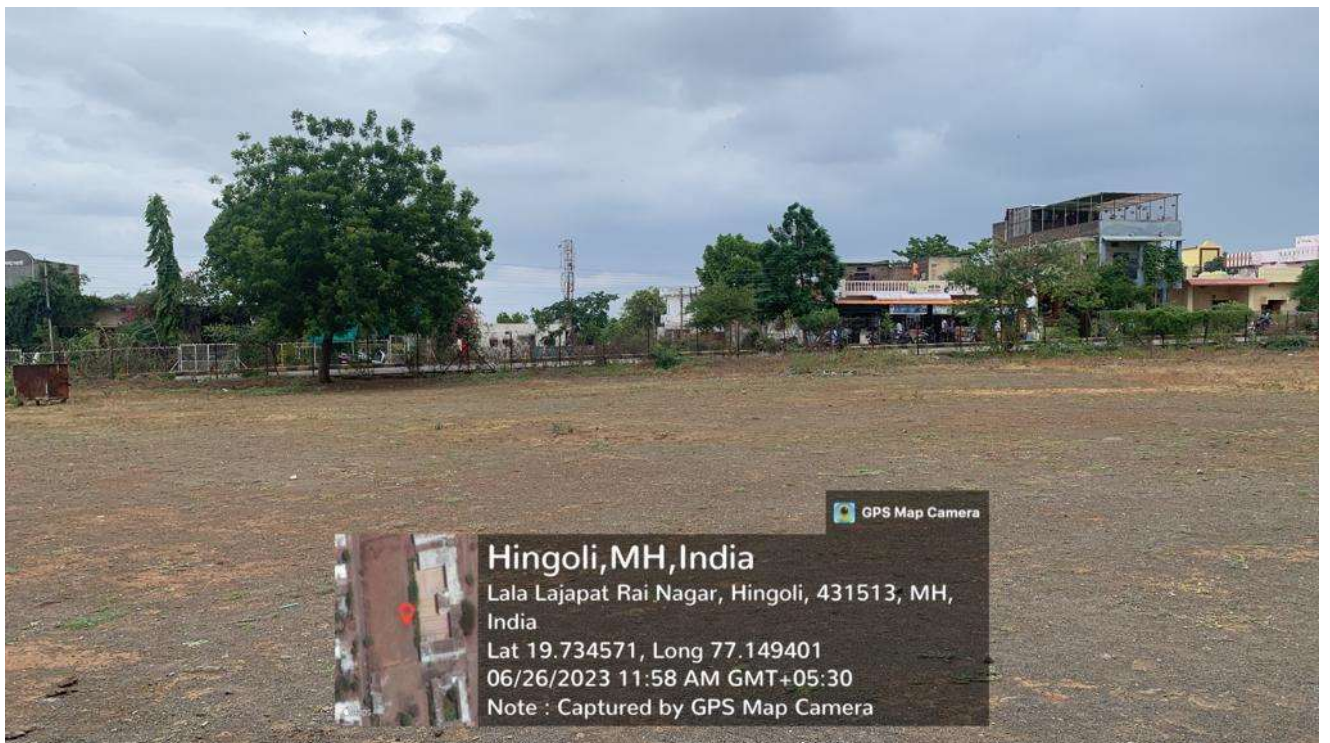


**Built in Ramp near Room No 6**



**Built in Ramp at entry gate of Institute**

**Green Campus Initiatives:**



**Restricted entry of Automobiles**



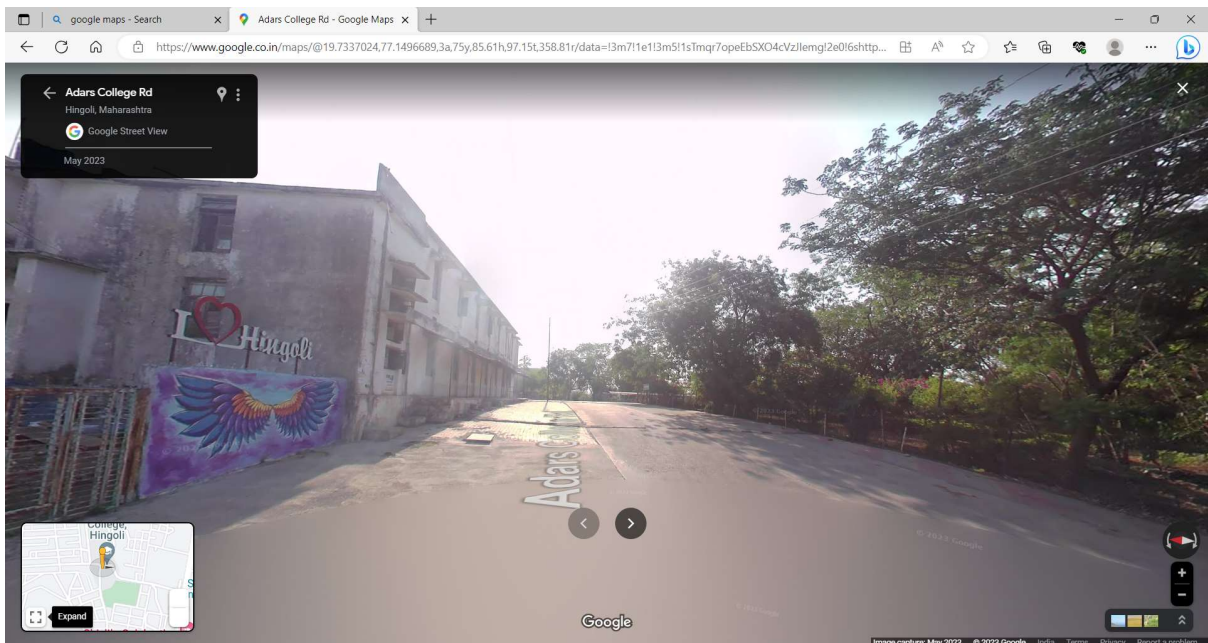
Restricted entry of Automobiles



Restricted Entry of Automobiles



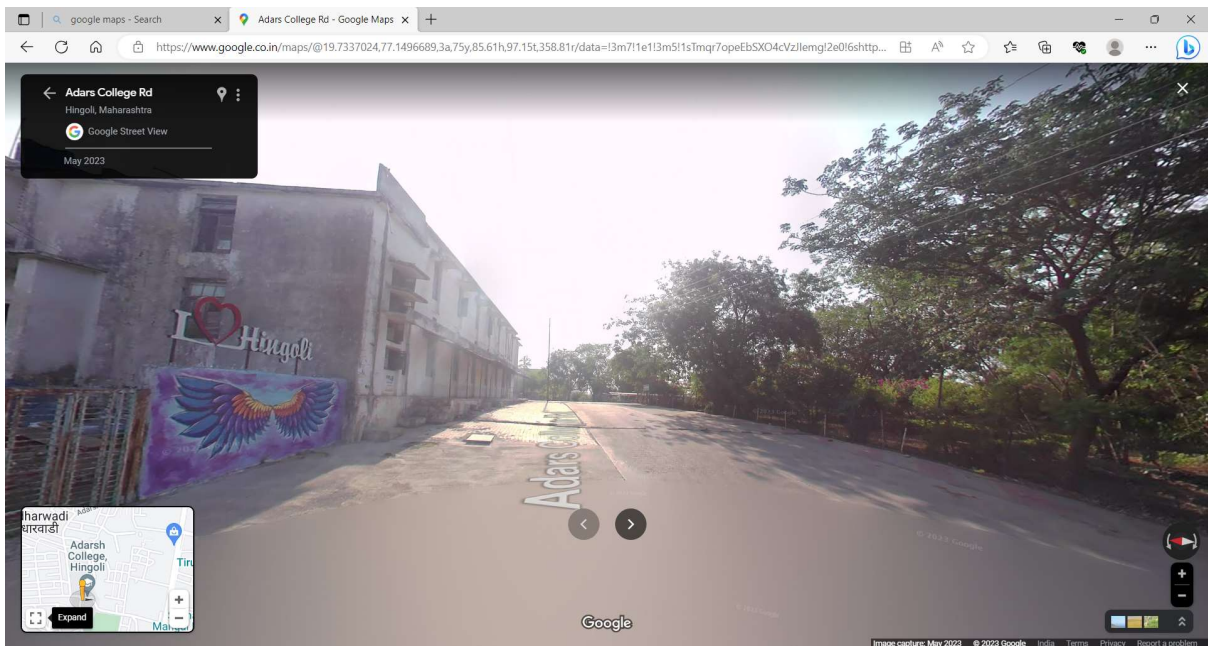
### Restricted entry of Automobiles



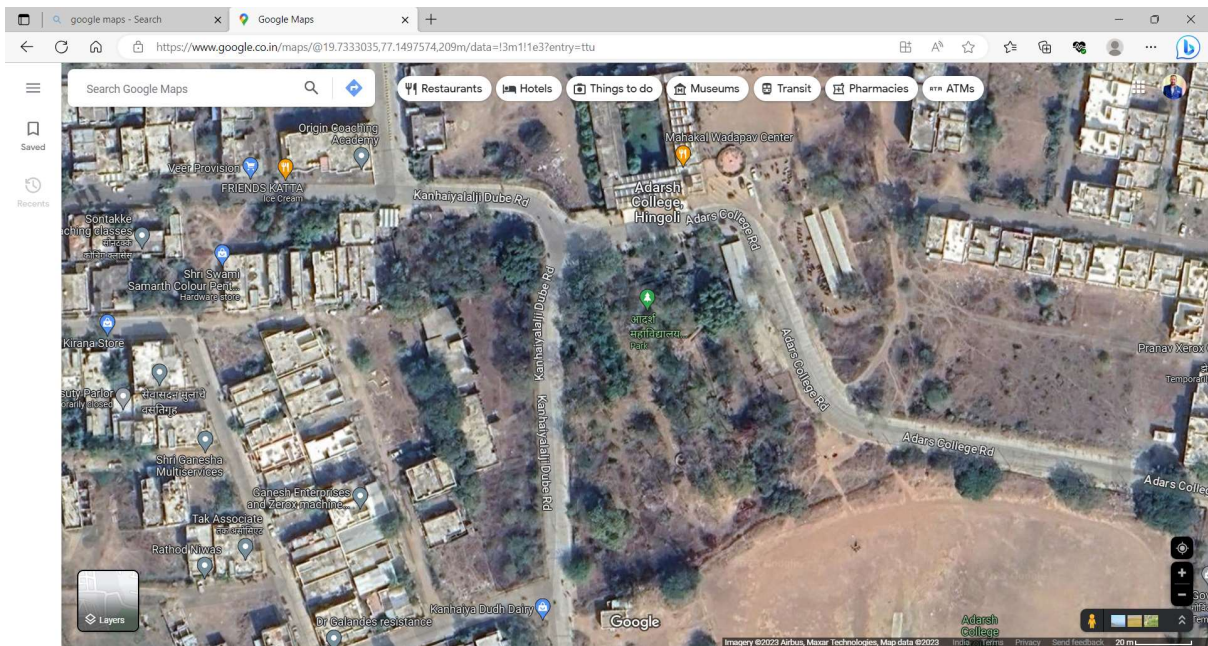
### Land Scaping Trees and Plants Using Google Maps



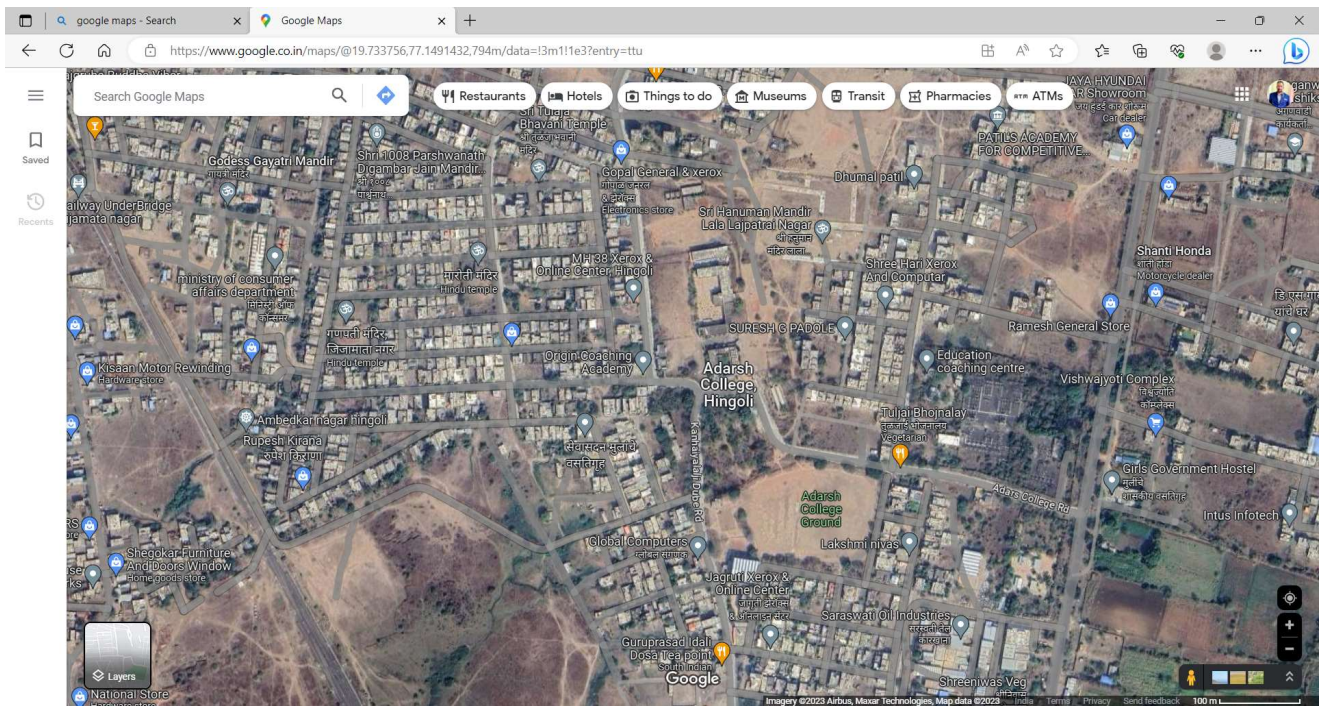
Land Scaping Trees and Plants Using Google Maps



Land Scaping Trees and Plants Using Google Maps



Land Scaping Trees and Plants Using Google Maps



Land Scaping Trees and Plants Using Google Maps



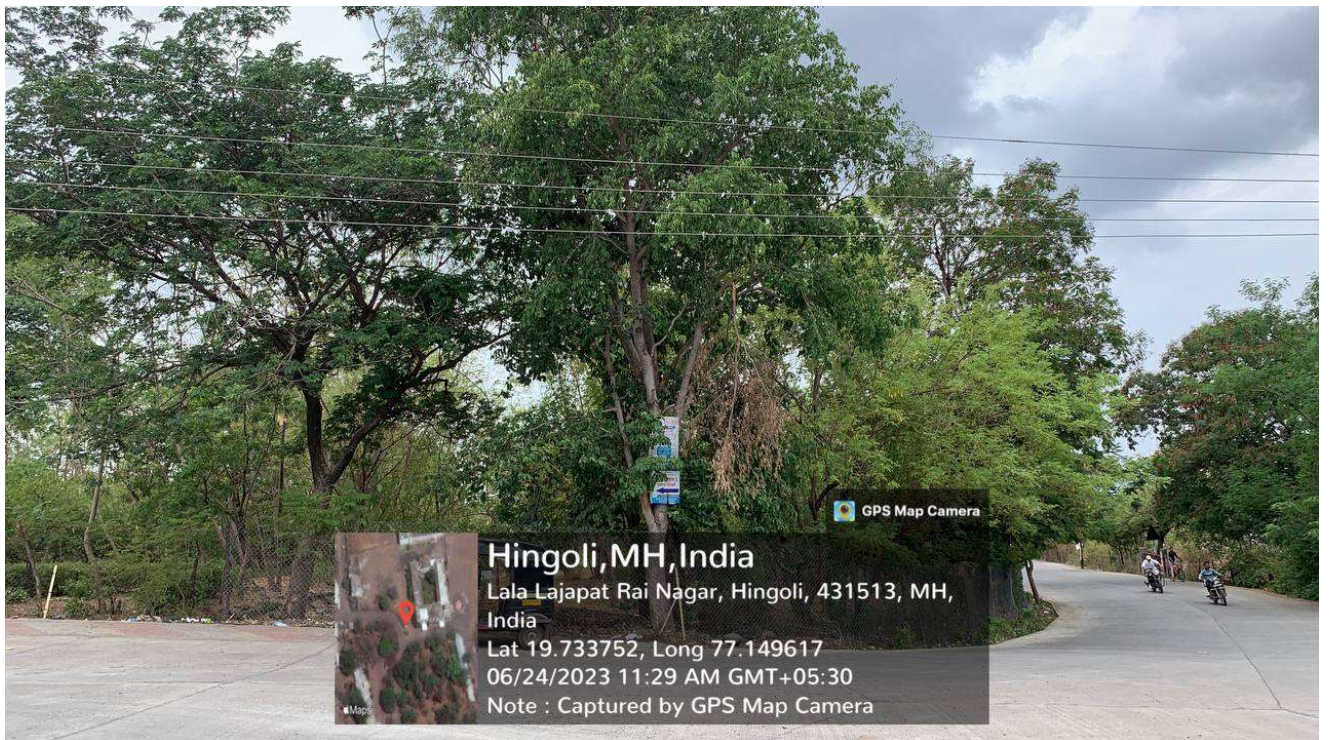
Land Scaping Trees and Plants



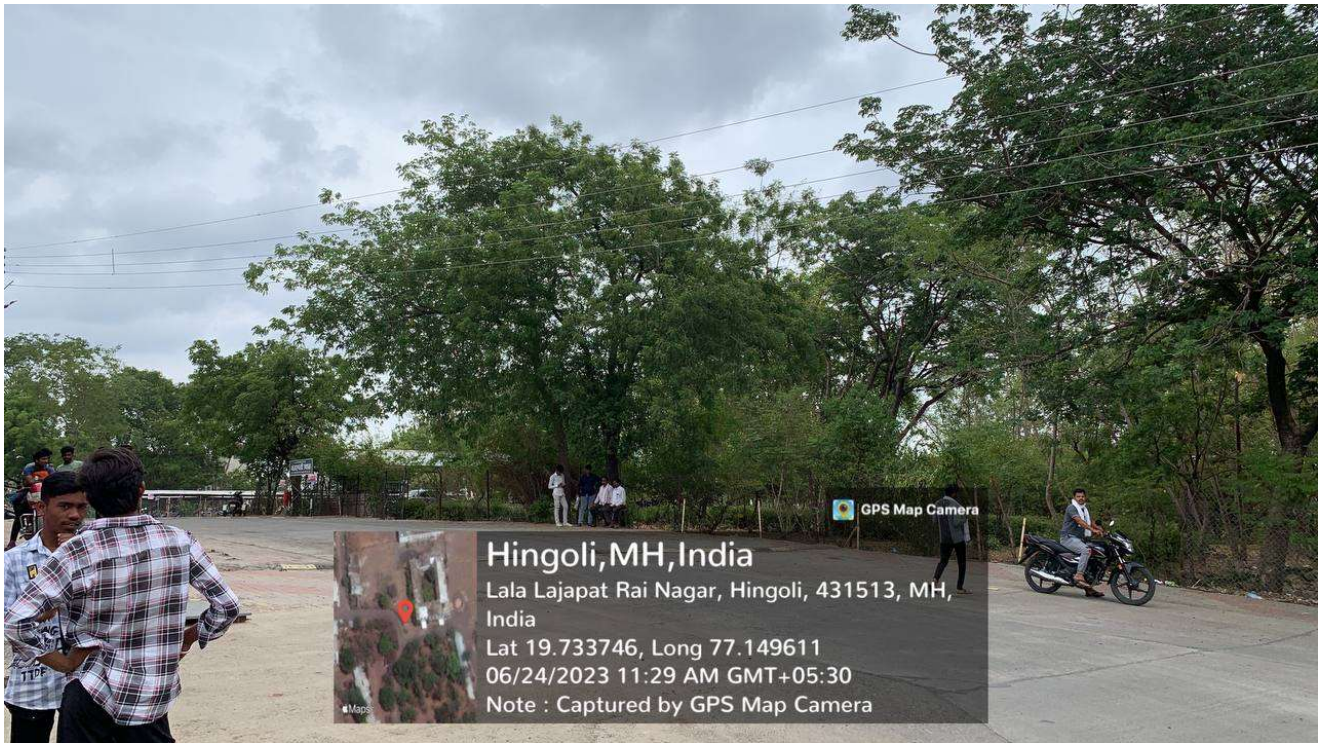
Land Scaping Trees and Plants



Land Scaping Trees and Plants



Land Scaping Trees and Plants



Land Scaping Trees and Plants



Land Scaping Trees and Plants



Land Scaping Trees and Plants



Land Scaping Trees and Plants



Restricted entry of Automobiles



Restricted entry of Automobiles



Restricted entry of Automobiles and Trees



Restricted entry of Automobiles and trees



Land Scaping Trees and Plants